

Introduction to LogIQ Curve's LC-360 - Warehouse Management System - 2

Partner with LogIQ Curve to transform your vision into innovative and practical solutions!

Creating Possibilities

Vision:

To be a **global leader in digital transformation**, driving innovation, AI-powered solutions, and sustainable growth for a tech-forward future.

Mission:

To **provide innovative, high-impact digital solutions** through advanced AI, software development, and cybersecurity, empowering businesses worldwide to achieve their goals and foster sustainable growth.



- Innovation

- Our relentless pursuit is to uncover innovative solutions that create exceptional value for our esteemed clients and collaborators.

- Collaboration

- As a united team, we cultivate open dialogue and shared esteem to realize our objectives.

- Customer-Centricity

- Unwavering commitment to customer satisfaction drives our honest and transparent approach, ensuring their needs remain at the core of our operations.

- Continuous Learning

- Continuous self-improvement, both personally and professionally, remains our unwavering commitment.

LogIQ Curve: Driving Digital Transformation with Excellence

- **Global Expertise:**
Established as a trusted partner in software development, cybersecurity, and digital marketing, serving clients across the GCC, USA, UK, and Europe.
- **Technological Prowess:**
Utilizing advanced tools and platforms like AWS, Azure, React, Angular, Python, and Magento to create cutting-edge solutions.
- **Tailored Solutions:**
Over a decade of delivering innovative, custom-built software and enterprise solutions, empowering businesses across diverse industries.
- **Commitment to Success:**
Our focus on innovation, quality, and measurable outcomes has made us a trusted partner for businesses aiming to thrive in a competitive digital landscape.
- **Proven Track Record:**
Successfully executed complex projects in e-commerce, cloud security, SaaS, mobile app development, and digital transformation for leading organizations.



Our Expertise

With a focus on quality, efficiency, and user-centric design, we leverage the latest technologies to develop software that is intuitive, reliable, and future-ready. Our transparent process and collaborative approach ensure your vision is realized within budget and on time.

- Front-End & Back-End Development
- Custom CMS & E-Commerce Platforms
 - SaaS, B2B, and B2C Solutions

Key Value Proposition:

We harness these cutting-edge tools, technologies, and platforms to deliver high-quality scalable solutions tailored to your business needs, ensuring efficiency, innovation, and a competitive edge in your industry.

LC-360 - Warehouse Management System | WMS-2

Statement of Work

Introducing LC-360 by LogIQ Curve, an **all-in-one supply chain software** designed to make logistics simple, scalable, and cost-effective. Built for 3PLs and Manufacturers, LC-360 eliminates the complexity of traditional systems, offering a seamless way to manage supply chain operations efficiently.

Why LC-360:

- Simple to use – No complicated setups or lengthy implementations.
- Scalable – Grows with your business, whether you're managing a single warehouse or a global network.
- Cost-effective – Get enterprise-grade capabilities without the high costs of traditional ERP systems.
- Modular & Flexible – Customize solutions to fit your specific needs.
- Seamless Integration – Works with existing systems for a smooth transition.

With LC-360, businesses can streamline operations, reduce costs, and stay ahead in an evolving supply chain landscape.

B2B fulfillment still remains manual, unintelligent and antiquated

Fragmented Systems

70% of businesses report struggling with siloed information systems.

Outdated Communication Tools

65% of companies still rely on email and spreadsheets for order processing.

Limited Visibility

Only **30%** of businesses have real-time visibility into their supply chain.

Delayed & Inaccurate Deliveries

45% of B2B deliveries are late or incorrect, leading to lost revenue and customer dissatisfaction.

Source: McKinsey & Company, Forrester Research, Gartner, Supply Chain Dive



LC-360 - a game changing Platform

Designed to reduce operational costs up to 25% and improve efficiency by over 35%

64%

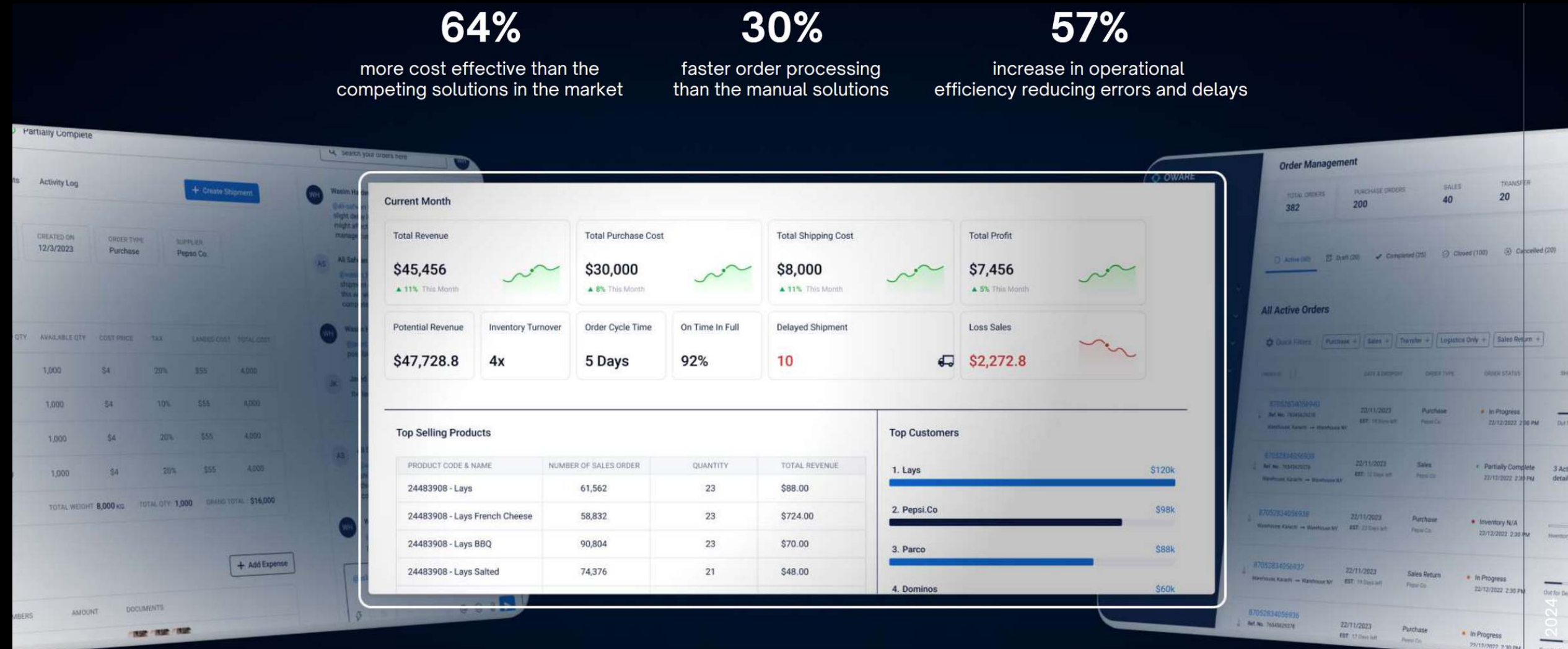
more cost effective than the competing solutions in the market

30%

faster order processing than the manual solutions

57%

increase in operational efficiency reducing errors and delays



LC-360 - The Perfect Add-On for Your Supply Chain

- **Seamless Integration**: works alongside your current systems like SAP or QuickBooks.
- **Easy to Use**: No complex setup. Just plug it into your existing system like you would with any CRM or HRM software.
- **Cost-Effective**: No need for expensive ERP upgrades — adds supply chain management at a lower cost.

About LC-360

A cloud-based supply chain platform that streamlines and optimizes operations. Its modular and flexible design allows for tailored setups to meet specific business needs

- Real-time Data Visibility
 - Unified Order Management
 - Centralized Control Tower
 - Customizable Dashboards
- Collaboration Module
 - Chat, upload and share documents on order level.
 - Upload expenses, Proof of Documents
- ai
 - Supply Chain AI assistant to help with routine tasks and reporting.

Key Modules

- **Stock 360** - Advanced Warehouse Management
- **Transit 360** - Shipment Planning and Tracking
- **Make360** - Manufacturing and Resource planning

MAKE - 360



MAKE - 360

Make360 is a complete Production & Resource Management module built to connect every step from design to dispatch. Get real-time visibility into costs, capacity, and flow—so teams stay aligned and work moves without friction.

What you get:

- Multi-stage BoM for complex product structures
- Routing with multiple stages and checkpoints
- Track labor, utilities, and machine usage in real time
- Production planning & scheduling to reduce bottlenecks
- Utility & machine costing for true item-level margin
- Collaboration across production, procurement, and warehouse
- WMS integration for sourcing-to-distribution traceability

Solutions with LC - 360

Order Creation

Integration with ERP/CRM:

- Orders are created and managed within LC - 360, integrating seamlessly with existing ERP and CRM systems.

Automatic Order Generation:

- Based on predefined business rules and customer requirements, orders are automatically generated, reducing manual entry and errors

Inventory Management

Real-Time Inventory Monitoring:

- As orders are created, Stock-360 provides real-time monitoring of inventory levels, ensuring accuracy and preventing overstock or stockouts.

Automated Picking and Replenishment:

- Utilizing FIFO, FEFO, or LIFO strategies, Stock-360 ensures efficient picking of products. Real-time data triggers automated stock replenishment to maintain optimal inventory levels.

Batch and Expiry Tracking:

- Stock-360 tracks batch numbers and expiry dates, ensuring compliance and quality control.

Shipments

Advanced Shipment Scheduling:

- Transit-360 uses advanced tools to plan and optimize shipment schedules, automating the selection of carriers and transporters.

Carrier and Load Management:

- Transit-360 allows for multiple carrier selection and integrates with carrier systems for real-time updates, optimizing load planning based on product weight and volume.

Real-Time Tracking:

- Provides end-to-end visibility of shipments from dispatch to final delivery, ensuring timely updates and accurate delivery confirmations.

What type of order you want to create?

Choose from one of the options below



Inbound

Streamline the receipt of goods into your supply chain. Effectively manage the process of receiving and recording items from customers.



Outbound

Efficiently manage the shipping and distribution of products to customers. Ensure timely deliveries and customer satisfaction.



Transfer

Optimize the movement of goods between different warehouse locations. Maintain accurate stock levels and distribution within your supply chain network.



Logistic

Track the movement of goods between two locations in your supply chain with precision and ease.

Supply Chain Network (35 Active Nodes)

From ▼

To ▼

Q Search

All Nodes ▼

All Shipments



Order Visibility

SHP-00027

Delivered

Completed - 13/08/2024 05:49 PM

Delivered in: 0 days

Cost: SAR 5,000

مستودع حافة الصحراء (Desert Edge Warehouse) → الجزيرة للمنتجات الغذائية (Al-Jazeera Food Products)

View GDN



LOG-00004

Ref No. Logistics 4

الأفضل لقطع غيار
الس...



الصقر لقطع غيار
السي...

13/08/2024

Logistic

أوتو جير لقطع غيار السيارات
(AutoGear Parts Co.)

Completed

13/08/2024 03:15 PM



LOG-00003

Ref No. Logistics 3

الرياض للتموين
R...



الكرم للأطعمة
Ka...

13/08/2024

Logistic

البركة للأطعمة
(Al-Barakah Foods)

Completed

13/08/2024 03:13 PM



OUT-00008

Ref No. SO 8

مستودع حافة الصحراء
...



التميز لقطع غيار
الس...

11/08/2024

Outbound

أوتو جير لقطع غيار السيارات
(AutoGear Parts Co.)

In Progress

13/08/2024 01:12 PM



SHP-00024

Ready for pickup

Carrier Assigned

EST: -1 days

Cost: SAR 4,000

مستودع حافة الصحراء (Desert Edge Warehouse) → التميز لقطع غيار السيارات (Al-Tamayuz Auto Parts)

Assign for Loading



Shipment 423

In Transit

Tracking

Comments

Details

ETA 11/11/2022

GRN has not yet Started

Create GRN

11/11/2022 • 2:40 PM

Dock Assignment Dock Assigned on shipment ID by Iqbal. (Dock Name)

11/11/2022 • 2:40 PM

Vehicle Picked Up on Shipment ID by Muzammil"

11/11/2022 • 2:40 PM

Shipment Assigned by Usama Baig

11/11/2022 • 2:40 PM

Shipment Completed

11/11/2022 • 2:40 PM

Dock Assigned on shipment ID by Iqbal. (Dock Name)

Order Tracking

Detailed BOM

< Edit Order (PR-00024)

ORDER ID
PR-00024

MAKE TYPE
Make To Order

ORDER STATUS
Pending

PLANNED QTY
500

MANUFACTURING LOCATION
Ihsan GLV Plant

TOTAL INGREDIENTS
-

MACHINES
-

CREATED ON
24/10/2025

Order Detail

Batches

Files

Order Ingredients

Process Step & Ingredient	UoM & Category	Source Location	Qty	Cost/Unit	Total Cost	Scrap Qty
<div>Process Step 1: Weaving</div> <div>POLYESTER FILAMENT YARN WOVEN INTO MICROFIBER GREIGE; COST CAPTURED IN FABRIC</div>						15 MIN PENDING
RM-YRN-PL-75D	Cone Raw Material	ABC	125	Rs0	Rs0	0
Polyester filament yarn woven into microfiber greige; cost captured in fabric (Operational)	Machine	-	500	Rs2.7	Rs1,350	-
<div>Process Step 2: Pretreatment</div> <div>DETERGENT WASH + SEQUESTERING; INITIAL HEAT-SET</div>						20 MIN PENDING
RM-CHEM-DETERG	DRUM Raw Material	ABC	1	Rs0	Rs0	0
RM-CHEM-SEQ	DRUM Raw Material	ABC	1	Rs0	Rs0	0
Detergent wash + sequestering; initial heat-set (Operational)	Machine	-	500	Rs1	Rs500	-
<div>Process Step 3: Dyeing</div> <div>PEROXIDE BLEACH + NEUTRALIZATION + OPTICAL BRIGHTENER</div>						30 MIN PENDING
RM-CHEM-ACID	DRUM Raw Material	ABC	1	Rs0	Rs0	0
RM-CHEM-OB	DRUM Raw Material	ABC	2	Rs0	Rs0	0

Multiple Stages and Routing

< Create Order

Order Make Type *

Make to Order

Sale Order *

SO-00007 - GLV-LTHR-003 (Leather Safety Gloves) - Shortfall: 55.000

Select Product & UoM *

GLV-LTHR-003 - Leather Safety Gloves

Carton (PRIMARY)

Planned Quantity & Manufacturing Location *

55

ABC

Planned Date *

Planned Date

Bill of Materials

Leather Safety Gloves

Manufacturing Process Steps

Process Step 1: Leather Cutting

DIE-CUT LEATHER PANELS

6 min

Process Step 1: Lining Attachment

STITCH INNER LINING TO PALM SECTION

5 min

Process Step 1: Full Glove Stitching

ASSEMBLE GLOVE USING HEAVY-DUTY MACHINE

7 min

Process Step 1: Edge Binding

STITCH AROUND CUFFS

2 min

Process Step 1: Visual Inspection

MANUAL CHECK FOR STRENGTH, LEATHER CRACKS

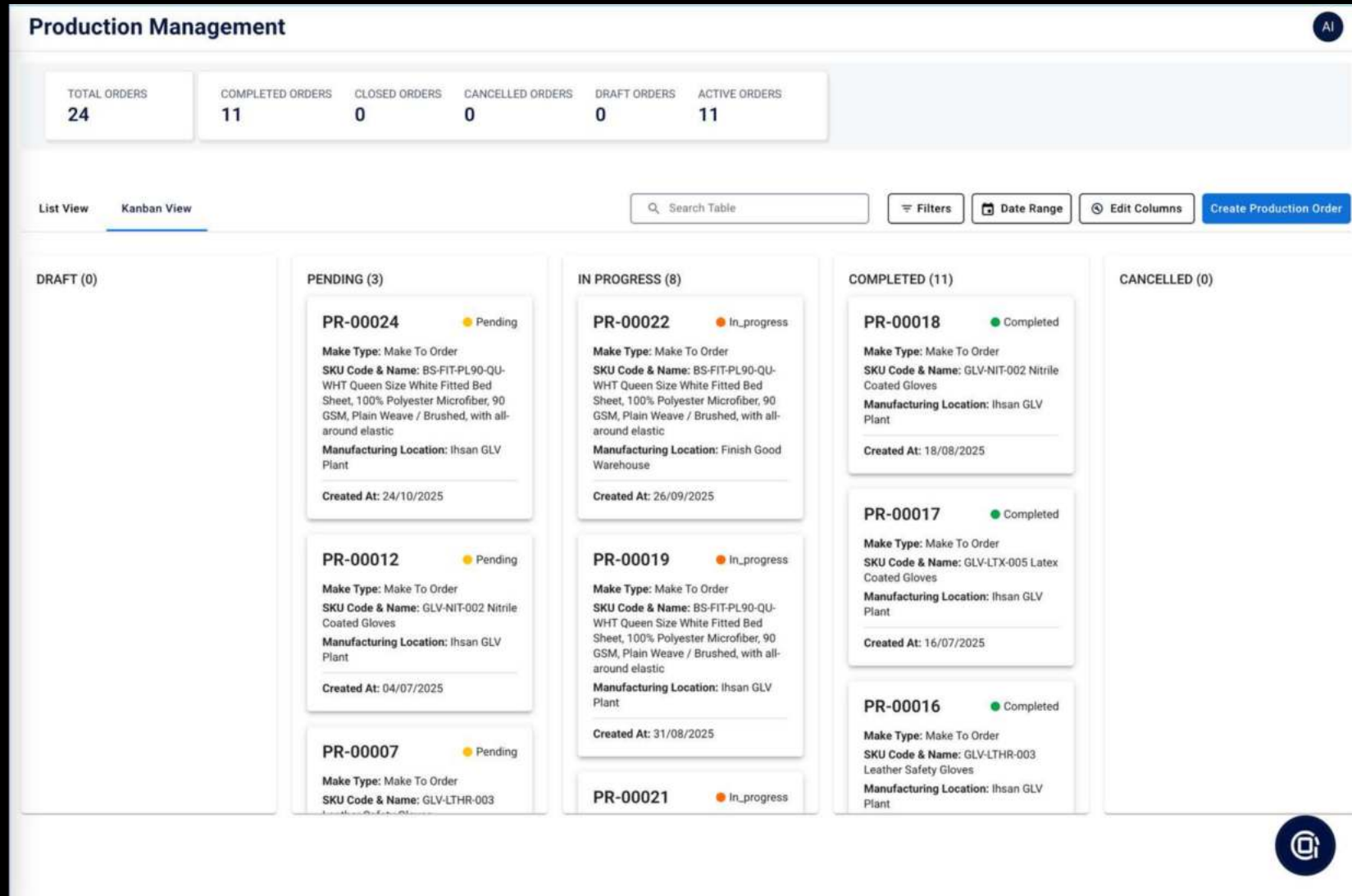
3 min

Process Step 1: Packing & Labeling

FOLD GLOVES INTO POLYBAG AND LABEL

2 min

Kanban View for Planning



Inventory Management

All Inventory

Filters

Bulk Upload

Edit Columns

Add Product

<input type="checkbox"/>	Sku & Node Name ↓	Brand & Category	Total Qty & UoM	Secondary Qty & UoM	Available	On Hold	In-Transit	Reserved	Damaged	Ordered	Weight/Volume	
<input type="checkbox"/>	0001 - Power Bank 1... Rawalpindi - 657	United Excellence	2,000 PCs	20 Carton	2,000	0	100 ⓘ	0	0	0	2,000 Kg 128,000 m³	
<input type="checkbox"/>	0001 - Power Bank 1... shahdara - 151155	United Excellence	890 PCs	8.9 Carton	890	0	100 ⓘ	0	0	1,750	890 Kg 56,960 m³	⋮
<input type="checkbox"/>	0001 - Power Bank 1... Lahore Warehouse - ...	United Excellence	42 PCs	0.42 Carton	40	0	0	0	2	0	42 Kg 2,688 m³	
<input type="checkbox"/>	0001 - Power Bank 1... USA warehouse - UW ...	United Excellence	840 ⓘ PCs	8.4 Carton	600	200	1,000 ⓘ	0	40	0	840 Kg 53,760 m³	
<input type="checkbox"/>	0001 - Power Bank 1... Abu Dhabi Warehouse ...	United Excellence	0 PCs	0 Carton	0	0	26,767.909 ⓘ	0	0	0	0 Kg 0 m³	
<input type="checkbox"/>	0001 - Power Bank 1... Karachi Warehouse - ...	United Excellence	4,331.662 ⓘ PCs	43.317 Carton	2,807	941	100,801,959 ⓘ	580 ⓘ	3,662	0	4,331.662 Kg 277,226.368 m³	
<input type="checkbox"/>	0001 - Power Bank 1... Lahore Warehouse - ...	United Excellence	401,432 ⓘ PCs	4,014.32 Carton	1,116	398,182	401,700 ⓘ	2,100 ⓘ	34	0	401,432 Kg 25,691,648 m³	
<input type="checkbox"/>	0002 - T-900 Smartp... Abu Dhabi Warehouse ...	United Excellence	0 Batch	-	0	0	1,200.89 ⓘ	0	0	0	0 Kg 0 m³	
<input type="checkbox"/>	0002 - T-900 Smartp... Lahore Warehouse - ...	United Excellence	220,000,000,000,119.97 ⓘ Batch	-	219,999,999,999,897.97	0	50,050,400 ⓘ	10 ⓘ	212	0	2,640,000,000,001,439.5 Kg 17,600,000,000,009,598 m³	
<input type="checkbox"/>	0002 - T-900 Smartp... USA warehouse - UW ...	United Excellence	0 Batch	-	0	0	200 ⓘ	0	0	0	0 Kg 0 m³	
<input type="checkbox"/>	0002 - T-900 Smartp... Karachi Warehouse - ...	United Excellence	1,502 ⓘ Batch	-	502	0	200,000,150,510 ⓘ	0	1,000	0	18,024 Kg 120,160 m³	
<input type="checkbox"/>	006 - Faiz Batch Di... Lahore Warehouse - ...	United Excellence	30 Batch	-	24	0	124,502 ⓘ	5 ⓘ	1	0	900 Kg 240 m³	

< SHP-00028

الكرم للأطعمة → (Al-Ka... الرضا للتموين (Al-R...

0.261 hrs ETA


15.634 km DISTANCE

Conversation

Details



SHIPMENT DETAILS

 الرياض للتأمين (Al-Riyadh Supplies) → الكرم للطعام (Al-Karam Foods) Completed

📅 14 August 2024 - 15 August 2024 🚚 DHL دى ایشل # -

Carrier Details

ORDER TYPE
LOGISTIC

CUSTOMER
البركة للأطعمة

CREATED BY
... 0 360

CREATED ON
14/08/24

DISTANCE
-

EST. TIME
days 22h

ORIGIN&DESTINATION
الرياض للتأمين (Al-Riyadh Supplie

Shipment Expenses

 DHL - دي إتش إل
BY O 360 • 14/08/24

SAR 5000

Handling Charges
BY O 360 • 14/08/24

SAR 300

 **Lifter Charges**
BY O 360 • 14/08/24

SAR 200

 **Transportation Costs**
BY O 360 • 14/08/24

SAR 1000

Documents

No document uploaded yet.

All Drivers

[Add Driver](#)

DRIVER NAME	CARRIER NAME	NIC	DRIVER LICENSE NUMBER	DRIVING LICENSE EXPIRY DATE
Noor Al-Amri <small>نور العامري</small>	Al-Saudi Logistics Group <small>مجموعة اللوجستيات السعودية</small>	789-123-456	3344556677	15/03/2026
Mohammed Al-Juhani <small>محمد الجهني</small>	GulfStream Logistics <small>اللوجستيات جلف ستريم</small>	654-321-098	2233445566	30/09/2025
Sara Al-Harbi <small>سارة الحربي</small>	Saudi Freight Solutions <small>حلول الشحن السعودية</small>	321-654-987	5566778899	23/11/2024
Khalid Al-Saudi <small>خالد السعودي</small>	Al-Haram Logistics <small>اللوجستيات الحرم</small>	456-789-012	1122334455	12/01/2025
Fatimah Al-Mutairi <small>فاطمة المطير</small>	DHL <small>دي اتش إل</small>	987-654-321	987654321	19/08/2026
Ahmed Al-Farhan <small>أحمد الفارسي</small>	Desert Edge Logistics	123-456-789	1234567890	05/12/2025

Edit Driver



Driver Name *

Noor Al-Amri نور العامري

Driver Code

DR006

Phone number *

Phone
+966 556 789 012

Driving License number

3344556677

Driving License Expiry Date

Driving License Expiry Date
15/03/2026



Carrier *

Al-Saudi Logistics Group مجموعة اللوجستيات السعودية



TIN

789-123-456

Cancel

Update Driver

Driver Management

Shipment Planning

Land		Sea	Air
Pick-Up Date 12/12/23	Drop-Off Date 03/01/24	Carrier Cost 5,000 USD ▼	
Carrier Name Fedex ▼	Vehicle Type Mazda Light Vehicle ▼	Vehicle Number KXR-3356-18 ▼	
Driver Name Ahmed Qazi ▼	Driver Number +92 322 444 5566	Seal Number 233	
Weight 7,000 kg	Container Number 345678	Tracking Link http://35224.adsd	
It is exceeding the maximum weight this vehicle type can carry.			
Total Volume (cm3) 16.38706			

Shipment to Order 1234

Port Qasim Bin Qasim, Karachi → New York

Warehouse, Karachi

N/A — N/A

Port Qasim, Karachi

N/A — N/A

Port New York

N/A — N/A

Add Carrier

Cancel

Save Draft

Create & Add Another

Create Shipment

Port Qasim, Karachi → Port New York

Details Schedule

3 Results

29/08/2023

	NAME	SHIPPING DAYS	DATE
DONE	One	58	29 Sep 2023 - 27 Nov 2023
Cosco	Cosco	59	29 Sep 2023 - 27 Nov 2023
Fedex	Fedex	59	29 Sep, 2023 - 27 Nov 2023

Cancel




Save Change

Vessel Planning

Trip Cost and Expense Management

< Order# 87052834056938 | Partially Complete

Edit All Expenses

EXPENSE NAME	TYPE	COST	DOCUMENTS
Fedex Land	Shipment 4556	5,000 USD	+
Damages	Shipment 4556	99.9 USD	 + 
Cargo Insurance	Miscellaneous	250 USD	+ 

CancelSave Changes

Lays Salt	Carton	4,000	0	\$1	20%	4,000
Lays Salt	Carton	3,000	0	\$1	20%	3,000

Export

TOTAL WEIGHT: 5,000 KG | TOTAL QTY: 1,000 | GRAND TOTAL: \$15,398.8

Search

Fedex Land	\$1,000
Cosco	\$5,000
Demurrage	\$99.9
Damages	\$99.99
Cargo Insurance	\$200
TOTAL EXPENSES	\$6,398.8

Key Insights

Potential Revenue 
Rs 14,959,389.275

Inventory Turnover
-9.85x

Order Cycle Time
0.663 Days

On Time In Full
83.529%

Delayed Shipments 
115

Loss Sales 
Rs 4,000,000 

Top Selling Products

PRODUCT CODE & NAME	NUMBER OF SALES ORDER	QUANTITY	TOTAL REVENUE
PP OG	76	65,494	Rs 25,843,390
LDPE 5230	120	49,225	Rs 20,193,285.475
LL 1018	42	51,000	Rs 18,830,730
LL 101	41	46,060	Rs 16,850,960
HD OG	15	42,750	Rs 15,674,250
LLDPE 488S	127	36,250	Rs 13,619,740
LL OG	64	25,650	Rs 9,551,700

Top Customers

1. Mohammad Arshad - PP	Rs 220,650,010.475
2. Rizwan Plastic GRW	Rs 57,758,253.4
3. Rizwan Ahmed	Rs 53,335,274
4. Salman Zaki	Rs 46,917,075
5. Greenwood Plastic Ihr	Rs 42,986,460

Key Results

The implementation of the LC - 360 platform will significantly enhance the supply chain efficiency and operational performance. The following key results highlight the impact of this advanced solution:

Enhanced Order Accuracy

Achieved a 25% reduction in order discrepancies.

The real-time tracking and automated order processing features of O360 will streamline the order creation process, ensuring accuracy and reducing manual errors.

Improve Shipment Efficiency

Reduced shipment delays by 30% and transportation costs by 10%.

Advanced shipment scheduling and carrier management tools will optimize shipment planning.

Optimized Inventory Management

Reduced stockouts by 20% and excess inventory costs by 15%.

The real-time inventory monitoring and automated replenishment strategies of O360 will ensure optimal inventory levels.

Trusted by



3PL WH service provider
for National Foods



Leading manufacturer of
Hygiene Products



Textile Manufacturer and
Top Amazon Seller



Burque Corproation
Distriutor & 3PL WH
Provider



Manufacturers of 250+
lubricants and engine oils



Global Sea Food Exporter
from Canada



3PL company in Saudi
Arabia

Abdul Latif Jameel
for Oils Company Limited

Toyota Dealers for GCC

And More...

Client Testimonials



Saad Kamal, Senior Operations Manager, Dynamic World Wide Logistics

“Implementing Stock360 was a game-changer for us. Our efficiency soared, and we gained unparalleled visibility and control over our operations. It's an indispensable tool for any 3PL warehousing service looking to stay ahead in today's competitive landscape.”



Mughees Butt, CEO of TCO, ex - Consultant at Bain

“Our efficiency has soared with Stock360! We now handle more than 50% of our existing volume, 60-70 orders on a daily basis and require fewer resources for documentation, all thanks to the automated system—remarkable”



Fahd Jaffri, Director Al Basit, Ex-Country Manager, SAF MARINE

“O360 has greatly enhanced our inventory visibility, addressing our import-related challenges effectively. We're highly satisfied and foresee it becoming a sought-after supply chain solution.”



You've heard from us.

We want to hear
from **you.**



<https://logiqcurve.com>



sales@logiqcurve.com



<https://www.linkedin.com/company/74860232/>