



LOGIQ CURVE

## Introduction to Education Management System (EMS)

Partner with LogIQ Curve to transform your vision into innovative and practical solutions!  
Creating Possibilities

## Vision:

To be a **global leader in digital transformation**, driving innovation, AI-powered solutions, and sustainable growth for a tech-forward future.

## Mission:

To **provide innovative, high-impact digital solutions** through advanced AI, software development, and cybersecurity, empowering businesses worldwide to achieve their goals and foster sustainable growth.



- **Innovation**

- Our relentless pursuit is to uncover innovative solutions that create exceptional value for our esteemed clients and collaborators.

- **Collaboration**

- As a united team, we cultivate open dialogue and shared esteem to realize our objectives.

- **Customer-Centricity**

- Unwavering commitment to customer satisfaction drives our honest and transparent approach, ensuring their needs remain at the core of our operations.

- **Continuous Learning**

- Continuous self-improvement, both personally and professionally, remains our unwavering commitment.

# LogIQ Curve: Driving Digital Transformation with Excellence

- **Global Expertise:**  
Established as a trusted partner in software development, cybersecurity, and digital marketing, serving clients across the GCC, USA, UK, and Europe.
- **Technological Prowess:**  
Utilizing advanced tools and platforms like AWS, Azure, React, Angular, Python, and Magento to create cutting-edge solutions.
- **Tailored Solutions:**  
Over a decade of delivering innovative, custom-built software and enterprise solutions, empowering businesses across diverse industries.
- **Commitment to Success:**  
Our focus on innovation, quality, and measurable outcomes has made us a trusted partner for businesses aiming to thrive in a competitive digital landscape.
- **Proven Track Record:**  
Successfully executed complex projects in e-commerce, cloud security, SaaS, mobile app development, and digital transformation for leading organizations.



# Our Expertise

With a focus on quality, efficiency, and user-centric design, we leverage the latest technologies to develop software that is intuitive, reliable, and future-ready. Our transparent process and collaborative approach ensure your vision is realized within budget and on time.

- Front-End & Back-End Development
- Custom CMS & E-Commerce Platforms
  - SaaS, B2B, and B2C Solutions

**Key Value Proposition:** We harness these cutting-edge tools, technologies, and platforms to deliver high-quality scalable solutions tailored to your business needs, ensuring efficiency, innovation, and a competitive edge in your industry.

# Education Management System | EMS

**AIM:** To provide meaning full data instantly to Organization's Decision Makers and managers to aid in timely and accurate decision-making and management.

**Introduction:** The Education Edge is an Educational Institution Management System and has been developed with the sole aim of providing accurately processed data to Management as decision support system. The system successfully addresses various command anomalies that exist in organizational setups and require tremendous paper work and time for implementation. It enables to get solutions for various day-to-day decision making queries with in seconds. The answers and solutions to such queries are accurate and correct to the best possible level. May it be Human Resource related data or organizational level information; it lies at click of a button or mouse from you. The system rids you of huge un-necessary paper work that costs heavily in terms of time, effort and resources. It provides speedy access into every nook and corner of the organization. Besides all this, the system provides absolute security and secrecy as well. Without proper designated clearance the system denies access to eavesdropper and un-authorized party cannot extricate data or information.

**Advantage:** The Biggest advantage of using our system is **customization**. It can be customized according to your organization requirements. If it does not support any specific need or requirement we can tailor our system to meet your requirements. Making it possible.

# Salient Features

- Client / Server Database Application
- Facility to define Unlimited Number of Branches
- Branch based Transactions
- User defined Setups
- Default Settings (Module Level, User Level)
- Bar Codes
- Online Reporting
- MIS Reports

# Salient Features

- Web Support
- Mail Merge
- Facility to Centralize the Database
- Integration with Finance
- Online Data Replication
- Manual Data Replication
- User Security (Menu Level, Form Level, Field Level) Front End controlled Database Backup and Restore



# LC - EMS



## Admission System

### Inputs:

- Document Types (Check List)
- Panel Types
- Subject Tests (for Admission)
- Test Grading Criteria
- **Admission Forms (Selling of forms / prospectus)**
- Applicant Bio data ∓ Applicant Interviews

# Admission System

## Reports:

- ✓ Form Receipts (for Applicant / Office Record)
- ✓ Test Slip
- ✓ Interview Slip
- ✓ Applicants' List
- ✓ Panel Applicants (for Interview)
- ✓ Applications Form Detail (with selling price)
- ✓ Issued / Submitted **Forms (Monthly comparison)**

LC - EMS



# LC - EMS



## Students Profile

### Inputs:

- Religion Information
- Country Information
- City Information
- City Area Information
- Class Section Information (with capacity of students in each section)
- Subject Section
- **Class Information (with Fixed Subjects / Combination Subjects)**
- Subjects Offered



## Students Profile

### Inputs:

- Class Subjects (Mapping of subjects with classes)
- Seat Types
- House Information
- Session Information
- Forbidden Subjects Combinations
- Student Bio data
- Mail Merge (sending automated emails or printing letters to parents / students)
- Student Leaving Correspondence detail



# Students Profile

## Reports:

- ✓ Listing Reports
- ✓ **Student Birthdays**
- ✓ Student Data Sheet
- ✓ **Student Data Sheet with Snaps**
- ✓ **Student Data Sheet with Contacts**
- ✓ Class List
- ✓ House List

LC - EMS





# Students Profile

## Reports:

- ✓ Attendance Sheet – Weekly
- ✓ Attendance Sheet – Monthly
- ✓ Envelops Printing
- ✓ Subjects Combination Report
- ✓ Subjects Combination Sheet
- ✓ Campus Status Report (Overall details about campus)
- ✓ Student ID Cards (with Bar Codes)
- ✓ Student Previous Qualification Grades

LC - EMS



LC - EMS

Thank To Sch



## Fee Billing System / Cambridge Fee System

### Inputs:

- Bank Information
- Fee Terms
- Scholarship Terms (if applicable)
- Student Fee Plan
- Fee Particular Category
- Fee Particulars
- Fee Particular Rates
- Computer / Science Lab Fee Plan
- Academic Scholarship Policy
- Revised Plan of Academic Scholarship Policy)

# Fee Billing System / Cambridge Fee System

## Reports:

- ✓ Listing Reports
- ✓ Issued Challans
- ✓ Receipts Printing
- ✓ Outstanding Fee
- ✓ Projected Fee
- ✓ Yearly Scholarships / Discounts
- ✓ Student Attendance Fine Challan

LC - EMS





## Students Attendance

### Inputs:

- Attendance Status
- Student Campus Attendance (Time In / Time Out)
- Student Paper Attendance

### Note:

Student Attendance can be done in 3 ways

1. Manually
2. With Thumb Scanner
3. With Bar Code Scanner

# Students Attendance

## Reports:

- ✓ Attendance Register – *Monthly*
- ✓ Attendance Register – *Date wise*
- ✓ Absents without Applications
- ✓ Monthly Student Status
- ✓ Student Absents
- ✓ Class Attendance
- ✓ Student Absents with Working Days
- ✓ Student Absents – *Monthly Comparison*
- ✓ Student Consecutive Absents

LC - EMS





# LC - EMS



## Timetabling

### Inputs:

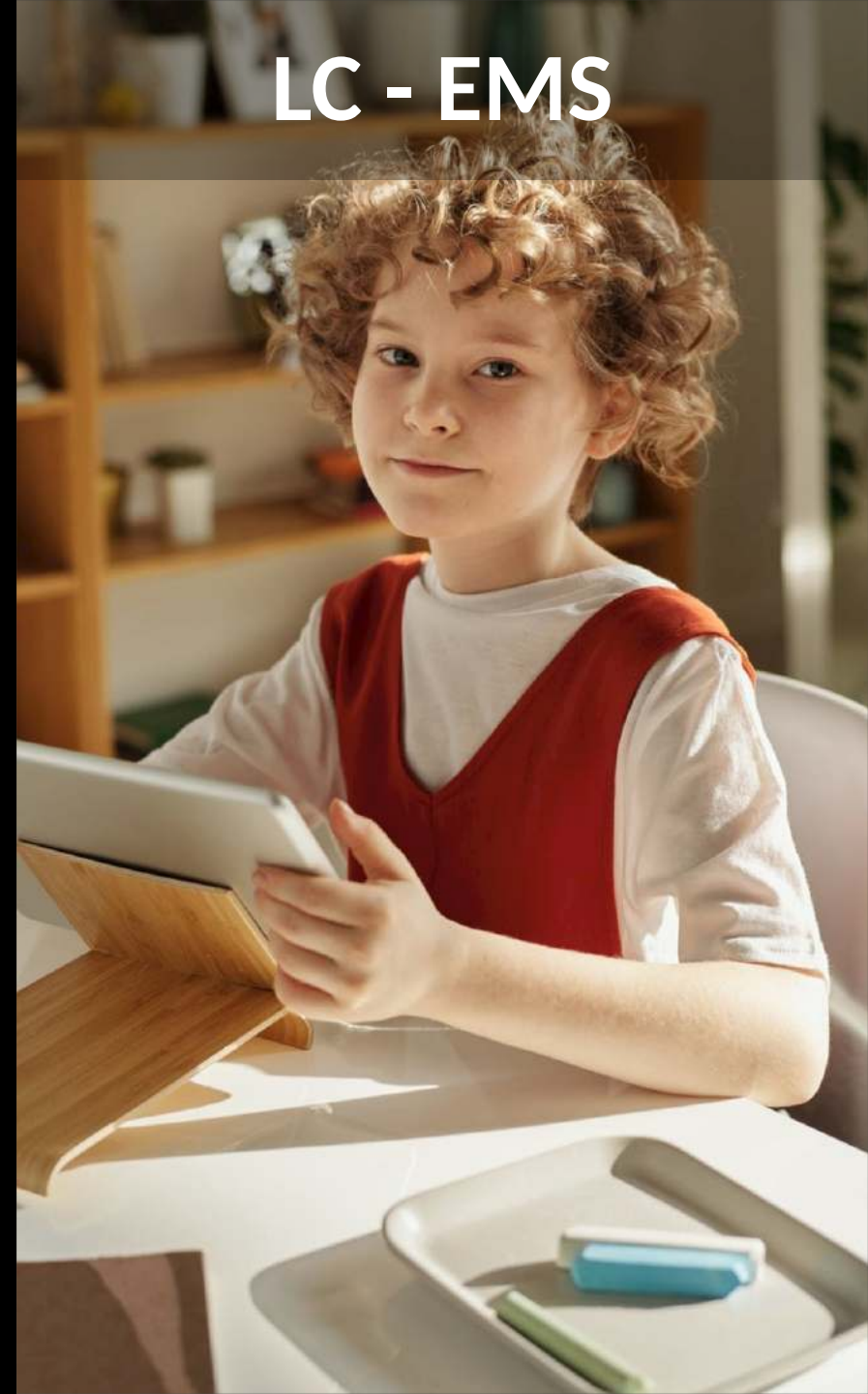
- Room Information
- Class Timings
- Class Rooms
- Lab Teachers
- Class Teachers
- Timetable (Auto / Manual)

# Timetabling

## Reports:

- ✓ Listing Reports
- ✓ Master Timetable
- ✓ Class Timetable
- ✓ Room Timetable
- ✓ Student Timetable
- ✓ Student Timetable - Weekly
- ✓ Teacher Timetable
- ✓ Free Period Timetable
- ✓ Teachers
- ✓ Free Period Timetable - Students
- ✓ Student Subject Clashes

LC - EMS



## Examination/Results System

### Inputs:

- Exam Types
- **Subject Papers**
- Subject Paper Grading Criteria
- **Student Results**
- Student Promotions



# Examination/Results System

## Reports:

- ✓ **Transcripts**
- ✓ **Listing Reports**
- ✓ **Blank Mark Sheets (for defined papers)**
- ✓ **Blank Attendance Sheets (for defined papers)**
- ✓ **Monthly Evaluation Grades**
- ✓ **Detailed Exam Results**
- ✓ **Student Result – *Monthly***

LC - EMS



# Examination/Results System

## Reports:

- ✓ **Student Result – *Monthly Comparison***
- ✓ **Student Subject Grades – *Monthly***
- ✓ **Student Subject Grades (for Promotion)**
- ✓ **Promotion Results – *All***
- ✓ **Promotion Results – *Student Wise***
- ✓ **Promotion Grades**
- ✓ **Student Paper Attendance Fine Report**

LC - EMS





# LC - EMS



## Staff Management / Profile

### Inputs:

- Religion Information
- Country Information
- **Qualification Information**
- **Department Information**
- **Designation Information**
- Category Information
- Staff Profile
- **Staff Timings**
- Staff Bank Holidays
- Staff Week Holidays Cancellation Plan of Staff Holidays

# Staff Management / Profile

## Reports:

- ✓ Listing Reports
- ✓ Birthdays
- ✓ Datasheet
- ✓ Datasheet with Snap
- ✓ Envelop Printings
- ✓ Employee ID Cards Generation (with Bar Codes)

LC - EMS



# LC - EMS



## Staff Attendance

### Inputs:

- Staff Late Come / Leave Early Setup

### Note:

Staff Attendance is also possible in 2 ways

- 1. With Thumb Scanner
- 2. With Bar Code Scanner

# Staff Management / Profile

## Reports:

- ✓ **Staff Week Holidays**
- ✓ **Staff Bank Holidays**
- ✓ **Staff Yearly Holidays**
- ✓ **Staff Attendance (Time In / Time Out detail)**
- ✓ **Late Come / Leave Early Details**
- ✓ **Monthly Attendance Register**
- ✓ **On Keeping Time (letter)**

LC - EMS







# LC - EMS

## Library System

### Inputs:

- Type Information
- Publisher & Author Information
- Publication Places
- Source Information
- Language Information
- Subject Information
- **Books Management**
- **Books (Issuance / Return) (manually or with Bar Code device)**



# Library System

## Reports:

- ✓ Listing Reports
- ✓ Books Listing – Subject Wise
- ✓ Books Listing – Author Wise
- ✓ Books Listing – Acc. No. Wise
- ✓ Books Issued Today
- ✓ Books Issued to a Person
- ✓ Overdue Books Bar Codes Printing

LC - EMS



## General Ledger Accounting System

### Inputs:

- User defined voucher types (e.g. Journal, Bank, Cash types)
- Cheque Books (Openings, Issuances etc.)
- Cancelled Cheques
- Chart of Accounts (user defined number of levels with user defined length for each level)
- Final Accounts Reports (Balance Sheet / Profit & Loss etc.)
- Journal Transactions
- Bank Transactions
- Cash Transactions
- Denomination Entry
- Day Close

# General Ledger Accounting System

## Reports:

- ✓ Chart of Accounts
- ✓ Voucher Printing
- ✓ Cash Book
- ✓ Bank Book
- ✓ Ledgers
- ✓ Trial Balance
- ✓ Final Accounts Printing

LC - EMS





# LC - EMS



## Purchase Management System

### Inputs:

- Locations / Stores / Warehouses
- Vendors Profiles – Location Wise & Integration with GL
- Item Definitions – Location Wise & Integration with GL
- Item Bar Codes
- Purchase Order
- Goods Received Note
- Purchase Invoice
- Goods Return Note
- Vendor Advances & Securities
- Vendor Payments (Invoice Wise)



# Purchase Management System

## Reports:

- ✓ Listing Reports
- ✓ Purchase Order Register
- ✓ Purchase Register
- ✓ Vendor Payment Register
- ✓ Vendor Payment Ageing
- ✓ Vendor Bills Ageing

LC - EMS





LC - EMS

# Inventory Management System

## Inputs:

- Stock Transfer Note

## Reports:

- ✓ Listing Reports
- ✓ Stock Ledger
- ✓ Stock Summary
- ✓ Slow Moving & Fast Moving Items



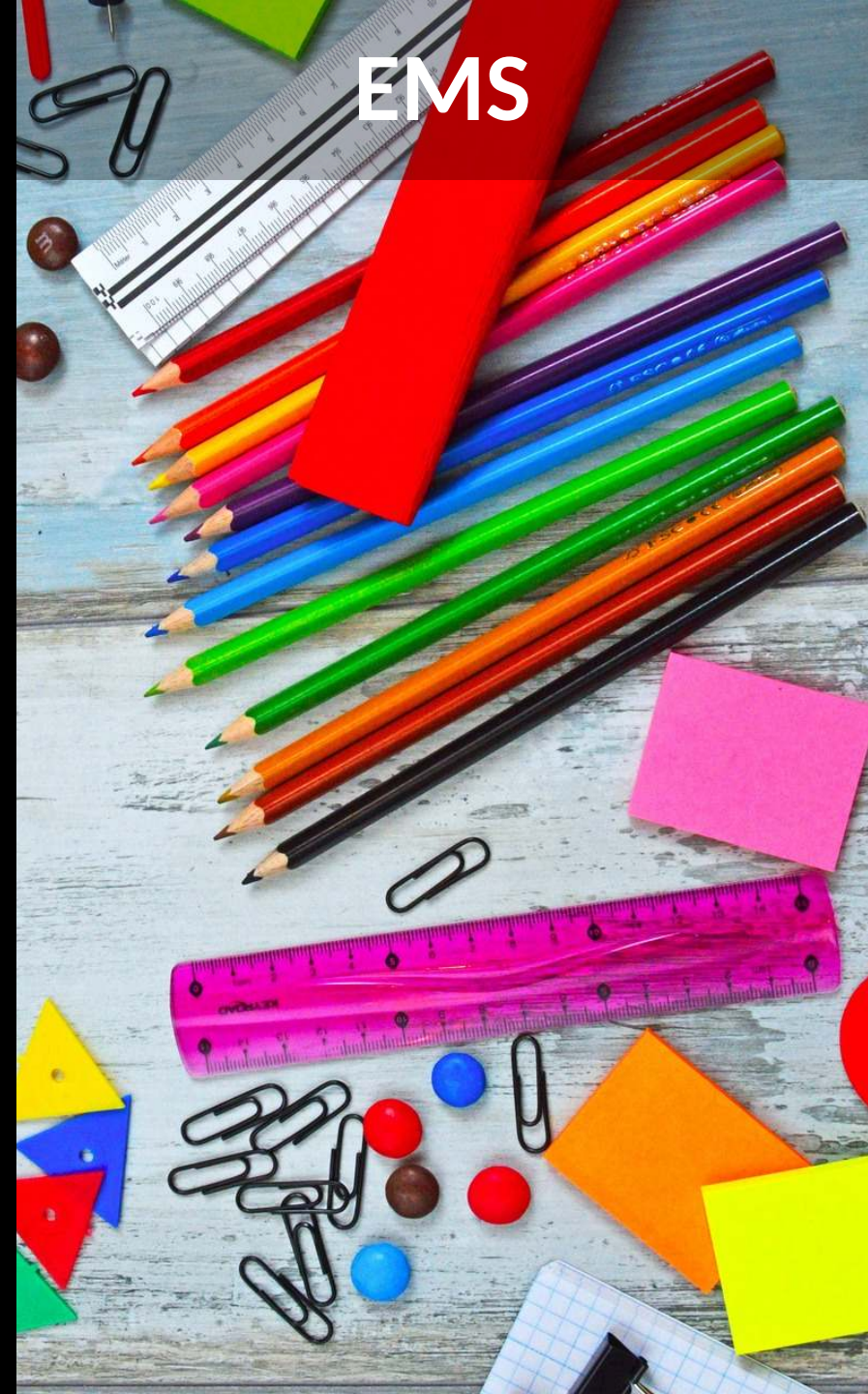




# Sales Management System

## Reports:

- ✓ Listing Reports
- ✓ Sale Register
- ✓ Customer Receipt Register
- ✓ Customer Receipt Ageing
- ✓ Customer Bills Ageing



## Accelerating Businesses with **Effective Solutions**

By automating routine tasks and streamlining operations, you can focus on delivering top-notch food and service, maximizing efficiency and productivity.

### **AIM**

To provide meaning full data instantly to Organization's Decision Makers and managers to aid in timely and accurate decision-making and management.

### **Advantage**

The Biggest advantage of using our system is **customization**. It can be customized according to your organization requirements. If it does not support any specific need or requirement we can tailor our system to meet your requirements. Making it possible.



You've heard from us.

We want to hear  
from **you.**



<https://logiqcurve.com>



[sales@logiqcurve.com](mailto:sales@logiqcurve.com)



<https://www.linkedin.com/company/74860232/>